

# NOVALINE<sup>®</sup> FASCIA COVER

DESIGN & INSTALLATION GUIDE

# LYSAGHT



# LYSAGHT NOVALINE® FASCIA COVER

## MATERIAL SPECIFICATIONS

Next generation ZINCALUME® aluminium/zinc/magnesium alloy coated steel complies with AS 1397:2011 G550, AM125 (550 MPa minimum yield stress, 125 g/m<sup>2</sup> minimum coating mass).

COLORBOND® is pre-painted steel for exterior roofing and walling. It is the most widely used. The painting complies with AS/NZS 2728:2013 and the steel base is an aluminium/zinc alloy-coated steel complying with AS 1397:2011. Minimum yield strengths are G550 (550 MPa).

The COLORBOND® pre-painted steel complies with AS/NZS 2728:2013.

The base metal thickness is 0.42mm.

## COLOURS

The NOVALINE® fascia cover is available in an attractive range of colours in COLORBOND® factory pre-painted steel.

## AVAILABILITY

NOVALINE® fascia cover is available in Victoria and is the perfect complement to all LYSAGHT® guttering systems.

## LENGTHS

NOVALINE® fascia cover is supplied custom cut.

## QUICK AND EASY FIXING

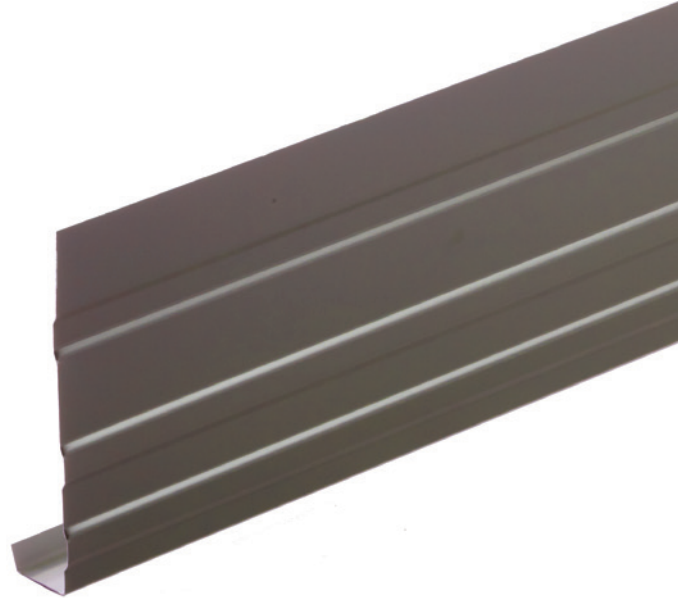
NOVALINE® fascia covers are designed to go over your existing fascia boards, so visual problems are totally concealed. Note: You may wish to trim the fascia cover to the height of your existing fascia boards on-site for best results.

## FALL

Install gutters with a suitable fall to avoid ponding and to allow water to easily flow away. Steeper falls are preferred for prolonged life of the gutter. Refer to the BCA and the Australian Standards for guidance.

## ADVERSE CONDITIONS

If these products are to be used within 1km of marine, severe industrial, or unusually corrosive environments, ask for advice from our information line.



## MAINTENANCE

The roof drainage system (gutter, downpipes, overflow devices and all other components) must be cleaned out on a regular basis.

Refer to our publication Maintenance Manual for Roofing & Rainwater Goods.

## HANDLING SAFETY

Lysaght product may be sharp and heavy. It is recommended that heavy-duty cut-resistant gloves and appropriate manual handling techniques or a lifting plan be used when handling material.

## METAL & TIMBER COMPATIBILITY

Lead, copper, bare steel and green or some chemically-treated timber are not compatible with this product; thus don't allow any contact of the product with those materials, nor discharge of rainwater from them onto the product. If there are doubts about the compatibility of other products being used, ask for advice from our information line.

## GUTTER SUPPORT

Use only an approved gutter overstrap to support the gutter.

## ROOF DRAINAGE SYSTEM DESIGN

Roof drainage systems should be designed and detailed by a suitably qualified trade or professional in accordance with the BCA and the Australian Standards. Particular reference should be made to the correct sizing of gutter; quantity and placement of downpipes; and the provision of appropriate overflow devices. Some supporting guidance is available in our publication LYSAGHT® Roofing & Walling Installation Manual (Section 6 – Roof Drainage).

## INSTALLATION ADVICE

The roof drainage system should be installed using good trade practices and by a certified installer.

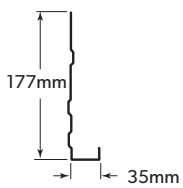
For sealed joints use screws or rivets and neutral-cure silicone sealant branded as suitable for use with galvanised or COLORBOND®/ZINCALUME® steel.

## CLEAN UP

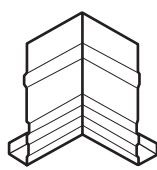
Remove all plastic cover strips from product and dispose of correctly.

Sweep all metallic swarf and other debris from roof areas, gutters, downpipes, overflow devices and all other roof drainage components, at the end of each day and at the completion of the installation.

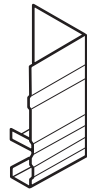
# LYSAGHT NOVALINE® COVER & ACCESSORIES



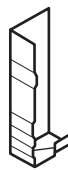
NOVALINE® fascia cover



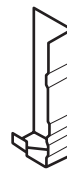
Internal corner  
ZINCALUME® &  
COLORBOND®



External corner  
ZINCALUME® &  
COLORBOND®



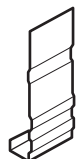
Barge mould right hand  
ZINCALUME® &  
COLORBOND®



Barge mould left hand  
ZINCALUME® &  
COLORBOND®



Splice plate  
ZINCALUME®



Apex cover  
ZINCALUME® &  
COLORBOND®



End closer  
ZINCALUME® &  
COLORBOND®



Internal cover cap  
COLORBOND®

## PRODUCT DESCRIPTIONS

- All descriptions, specifications, illustrations, drawings, data, dimensions and weights contained in this catalogue, all technical literature and websites containing information from Lysaght are approximations only. They are intended by Lysaght to be a general description for information and identification purposes and do not create a sale by description. Lysaght reserves the right at any time to:

- (a) supply Goods with such minor modifications from its drawings and specifications as it sees fit; and
- (b) alter specifications shown in its promotional literature to reflect changes made after the date of such publication.

## DISCLAIMER, WARRANTIES AND LIMITATION OF LIABILITY

- This publication is intended to be an aid for all trades and professionals involved with specifying and installing Lysaght products and not to be a substitute for professional judgement.
- Terms and conditions of sale available at local Lysaght sales offices.
- Except to the extent to which liability may not lawfully be excluded or limited, BlueScope Steel Limited will not be under or incur any liability to you for any direct or indirect loss or damage (including, without limitation, consequential loss or damage such as loss of profit or anticipated profit, loss of use, damage to goodwill and loss due to delay) however caused (including, without limitation, breach of contract, negligence and/or breach of statute), which you may suffer or incur in connection with this publication.

© Copyright BlueScope Steel Limited 19 September, 2016

**WWW.LYSAGHT.COM**

**Technical enquiries:**  
**steeldirect@bluescopesteel.com or call 1800 641 417**

LYSAGHT®, NOVALINE®, COLORBOND® and ZINCALUME® are registered trademarks of BlueScope Steel Limited, ABN 16 000 011 058. The LYSAGHT® range of products is exclusively made by or for BlueScope Steel Limited trading as Lysaght.



LYT0032 19.09.16